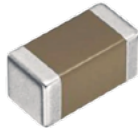


FX-LR0005



DC Bias Current Unit	
Frequency	40Hz~3MHz
Max. Current	DC ±2A
Max. Applied Voltage	DC ± 40V
Terminal Connector	4-Terminal Pair, BNC
DUT Connection	4-Terminal
Operating Temperature	0° C to 55° C
Applicable Models	6363~6367、6632、6621、6630

SMD



DIP



- Freq.
- 3MHz
- 5MHz
- 10MHz
- 20MHz
- 30MHz
- 50MHz

Applicable Models



6363 ~6367



6630



6632



6621