

# The Optimal Choice for Electronic Component Analysis!

## 6360 Series LCR Meter

0.1Hz~1MHz

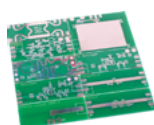


### Application



Magnetic material

$\mu_r'' / \mu_r'$



Dielectric / ceramics / Electrochemical materials

$\epsilon_r' / \epsilon_r''$



Voice coil motor

Ls / Q / Qm / SRF

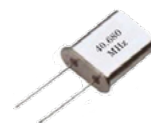


Hearing aids



Piezoelectric element

Cs / Cp / D / Fs / Fp / Kp



Quartz crystal



Wireless charging

Ls / Q / SRF / DCR / Rs

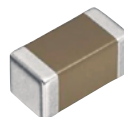


NFC / RFID



Battery

Cs / Cp / D



MLCC

Cs / Cp / D / Q / DC Bias Voltage



Capacitance



Diode

Cs / Cp / D



Inductance

Ls / Lp / Q / SRF / I sat / I rms



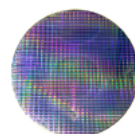
Wafer

C-V



LED Light board

Z / Cs / Cp / D



MOSFET

Cgd/Cgs/Cds

# LCR Meter

## 6363 / 6364 / 6365 / 6366 / 6367

## 6360 Series

Frequency Range  
10Hz~1MHz

Component Tester



The 6360 Series LCR Meters provide accurate and reliable basic measurement functions. With test frequencies of 20kHz, 100kHz, 200kHz, 500kHz, and 1MHz, the instrument can display up to 4 parameters simultaneously on a single screen. Featuring an intuitive user interface and simple operation, the 6360 Series is an ideal choice for quality assurance(QA) and incoming inspection(IQC) applications.

## Application

Passive Components | Resistors, capacitors, inductors, oscillators, sensors, delay lines, filters, resonators

Acoustic Components | Speaker coils, headphone coils

## Features

- Basic Accuracy  $\pm 0.05\%$
- Low-Frequency Measurement Capability (Model 6365A): Effectively measures large-capacitance aluminum electrolytic capacitors
- Four Parameters Displayed Simultaneously
- Multi-Step List Measurement: Supports up to 8 programmable test steps
- Save test screens and measurement data directly (USB Host)
- Interfaces Supported RS-232/ Handler/ LAN/ USB Host/ GPIB (Optional)
- Suitable for production lines, quality control, incoming inspection, and automated test systems
- Optional PC Link software
- Comparator/ BIN



## Standard Interfaces

RS-232

USB Host

Handler

LAN

## Specification

Model	6363	6364	6365	6365A	6366	6367	6367A
Frequency Range	10Hz~20kHz	10Hz~100kHz	10Hz~200kHz	0.1Hz~200kHz	10Hz~500kHz	10Hz~1MHz	0.1Hz~1MHz
Points of test Frequency	Programmable						
Frequency Resolution	5 Digits						
Frequency Output Accuracy	±0.01%						
Basic Accuracy	±0.05%						
AC Drive Level	10mV~2Vrms (1mV Resolution)						
DC Drive Level	10mV~2V (1mV Resolution)						
Output Impedance	100Ω						
Measurement Parameters and Ranges	Z   , Rs, Rp, X	0.001mΩ~99.999MΩ					
	Y   , G, B	0.1nS~99.999S					
	Cs, Cp	0.01pF~9.9999F					
	Ls, Lp	0.1nH~99.999kH					
	D	0.00001~9.9999					
	Q	0.1~9999.9					
	DCR	0.001mΩ~99.999MΩ					
	Δ%	-9999%~999%					
	θ	-180°~ +180°					
Test Time (Fastest)	5mS						

## General

Measured Value Detection Mode	Define upper and lower thresholds according to main and sub parameters
Measurement Circuit	Series/ Parallel
Test Mode	Meter Mode, Multi-Step Test Mode
Test Range	Automatic, Lock
Indicator	Pass, Fail
Correction	Open Circuit/ Short Circuit
Built-in Storage	128 sets
USB Host Storage	Testing screen and data
Trigger Test	Auto/ Manual/ RS-232/ Handler/ GPIB (Option OP-636001)
Interface	USB Host/ RS-232/ Handler/ LAN/ GPIB (Option OP-636001)
PC Link Software	●
Power Supply	Voltage : 98-132Vac or 195-264Vac (switchable)
	Frequency : 47-63Hz
Power Consumption	65VA
Display	7" TFT, Color LCD (800*480)
Environment	Temperature : 10~40°C, Humidity : 20~90%RH
Dimension(W*H*D)	358x148x343 mm
Weight	5.8 Kg

# Functions

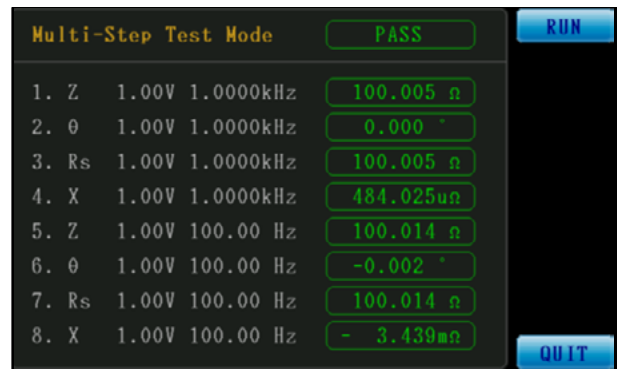
## Displays up to four parameters simultaneously and supports PC connectivity

Featuring automatic balancing bridge measurement technology, equipped with an 800\*400 7-inch Color LCD, capable of simultaneously setting and displaying 4 parameters. It supports PC connectivity for graphical scanning and analysis using dedicated software.



## Multi-Step Test Mode – Up to 8 Programmable Steps

In Multi-Step Mode, measurement conditions and parameters can be preset in up to 8 steps.



## Measurements of components below 1 MHz

MICROTEST 6360 series LCR Meter offers a testing frequency range from 10Hz~1MHz, suitable for production line or incoming inspection tests, ensuring quality control of passive components for customers.

It supports Handler interface and built-in BIN classification function for component quality sorting, with up to 9 levels. Additionally, it allows rapid retrieval of test screens and data via USB Host.

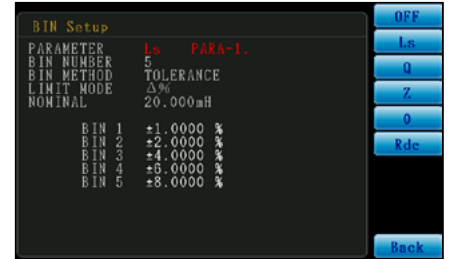
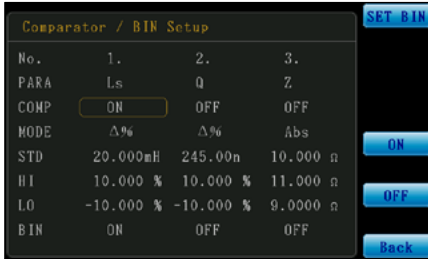
### Parameters

IZI, IYI,  $\theta$ , X,  $R_s$ ,  $R_p$ , G, B, Ls, Lp, D, Q, DCR, Cs, Cp



## Support BIN and Comparator function

Within this function, ABS,  $\Delta$ ABS, and  $\Delta\%$  can be selected to compare the differences between measured values and standard values, with up to 9 levels of classification.



## Accurately measure the motor's inductance

Precisely measuring the motor's inductance ensures balance among its phases, preventing issues like uneven rotation during operation.

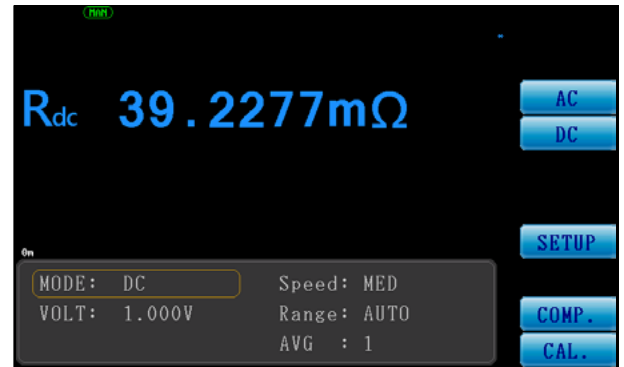
Purpose of Measuring Motor Inductance:

- Preventing uneven rotation
- Balancing inductance among motor phases
- Ensuring compatibility and consistency between the driver and motor



## Optimal Choice for Wireless Charging Coil Measurement

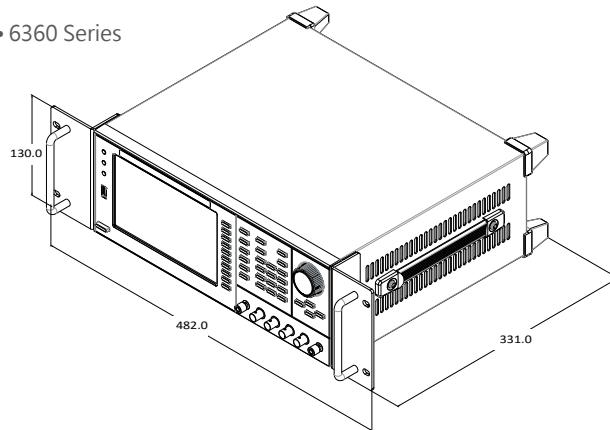
The Inductance (Ls), Quality Factor (Q), Series Resistance (Rs), and DC Resistance (DCR) of wireless charging induction coils reflect their energy efficiency and losses at specific frequencies. The 6360 series LCR Meter offers a testing frequency range of 10Hz to 1MHz with a basic measurement accuracy of  $\pm 0.05\%$ , enabling precise measurement of these critical parameters. This ensures the charging efficiency and stability of wireless charging coils.



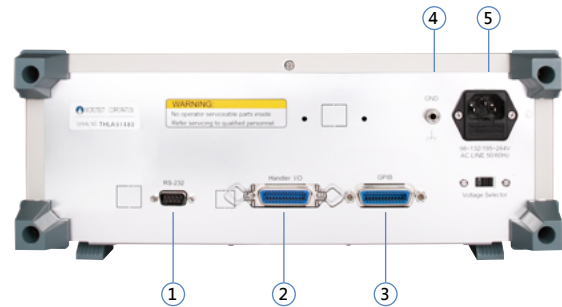
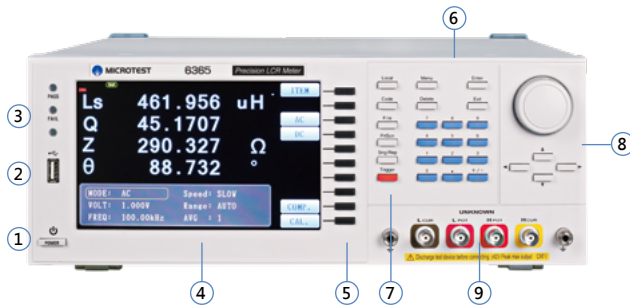
## Automatic Chassis Dimension

• Dimension (mm)

• 6360 Series



## Appearance



- 1. Power Switch
- 2. USB
- 3. PASS/ FAIL/ BIAS
- 4. LCD Screen
- 5. Function

- 6. Setup/ Number Key
- 7. Trigger
- 8. Direction
- 9. BNC terminal

- 1. RS232
- 2. Handler
- 3. GPIB (Optional)
- 4. GND

- 5. Power Jack/ Fuse Block

## Ordering Information

6360 LCR Meter	Standard	Optional
<ul style="list-style-type: none"> <li>• 6363 (Frequency Range 10Hz~20KHz)</li> <li>• 6364 (Frequency Range 10Hz~100KHz)</li> <li>• 6365 (Frequency Range 10Hz~200KHz)</li> <li>• 6365A (Frequency Range 0.1Hz~200KHz)</li> <li>• 6366 (Frequency Range 10Hz~500KHz)</li> <li>• 6367 (Frequency Range 10Hz~1MHz)</li> <li>• 6367A (Frequency Range 0.1Hz~1MHz)</li> </ul>	<ul style="list-style-type: none"> <li>• F423906A Kelvin Clip Leads (100cm)</li> <li>• Power Cord</li> </ul>	<ul style="list-style-type: none"> <li>• F423906B Kelvin Clip Leads (200cm)</li> <li>• F663001A BNC Test Leads (50cm)</li> <li>• F663001B BNC Test Leads (100cm)</li> <li>• F663001C BNC Test Leads (200cm)</li> <li>• F420001 External Voltage Bias (±200V/1MHz)</li> <li>• F420003 External Voltage Bias (±40V/1MHz)</li> <li>• F420006 External Voltage Bias (±2000V/1MHz)</li> <li>• FX-0000C6 DIP Test Fixture</li> <li>• FX-0000C9 Material Testing Fixture</li> <li>• FX-0000C10 Bottom Electrode SMD Test Fixture</li> <li>• FX-0000C11 SMD Tweezers Test Leads</li> <li>• FX-0000C12 SMD Test Fixture</li> <li>• FX-0000C19 DIP Test Fixture</li> <li>• FX-0000C4 DIP Test Fixture</li> <li>• TL-000003 RS-232 Cable (180cm)</li> <li>• OP-636001 GPIB Interface</li> <li>• PC Link Software</li> </ul>

# Fixture & Accessories

**FX-000C19**  
DIP Test Fixture



**F423906A**  
Kelvin Clip Leads (100cm)

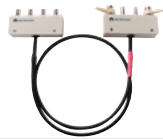


**F423906B**  
Kelvin Clip Leads (50cm)

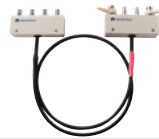


Frequency	DC~50MHz	DC~1MHz	DC~1MHz
Max. Voltage/ Current	±42V	±42V	±42V
DUT Size	-	Max. 6mm	Max. 6mm
Applicable Models	6632/ 6621/ 6630/ 6363~6367	6632/ 6621/ 6630/ 6363~6367	6632/ 6621/ 6630/ 6363~6367

**F663001A**  
BNC Test Leads (50cm)



**F663001B**  
BNC Test Leads (100cm)



**F663001C**  
BNC Test Leads (200cm)



Frequency	DC~20M	DC~10M	DC~5MHz
Max. Voltage/ Current	±200V	±200V	±200V
DUT Size	-	-	-
Applicable Models	6632/ 6621/ 6630/ 6363~6367	6632/ 6621/ 6630/ 6363~6367	6632/ 6621/ 6630/ 6363~6367

**F420001** External Voltage Bias (±200V/1MHz)    **F420003** External Voltage Bias (±40V/1MHz)

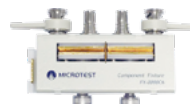


**F420005** External Voltage/Current Bias (±40V/100mA)

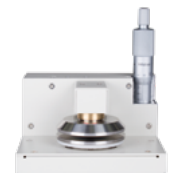


Frequency	100Hz~1MHz	100Hz~1MHz	≤ 30 MHz
Max. Voltage/ Current	±200V	±40V	DC ±40V
Accessory Description	-	-	DC ±100mA
Applicable Models	6632/ 6621/ 6630/ 6363~6367	6632/ 6621/ 6630/ 6363~6367	6632/ 6621/ 6630

**F420006** External Voltage Bias (±2000V/1MHz)    **FX-0000C6** DIP Test Fixture

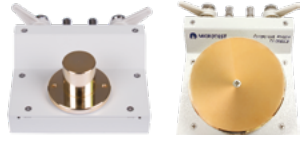


**FX-0000C7** Dielectric Material



Frequency	100Hz~1MHz	DC~30MHz	≤30MHz
Max. Voltage/ Current	±2000V	±42V	±42V
DUT Size	-	-	≤10mm (Electrode Diameter : 38mm · 5mm)
Applicable Models	6632/ 6621/ 6630/ 6363~6367	6632/ 6621/ 6630/ 6363~6367	6632/ 6621/ 6630

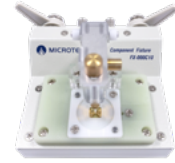
**FX-0000C8**  
Magnetic Material Test Fixture



**FX-0000C9**  
Material Testing Fixture



**FX-0000C10**  
Bottom Electrode SMD Test Fixture



Frequency	≤30MHz	DC~30MHz	DC~30MHz
Max. Voltage/ Current	±42V	±42V	±42V
DUT Size	Type A : OD 8, ID 3.1, H 3mm Type B : OD 20.5, ID 4.8, H 11mm Type C : OD 65.5, ID 7.1, H 28mm	≤10mm	≤9x9x5mm
Applicable Models	6632/ 6621/ 6630	6632/ 6621/ 6630/ 6363~6367	6632/ 6621/ 6630/ 6363~6367

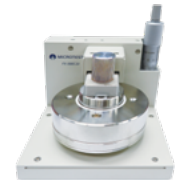
**FX-0000C11**  
SMD Tweezers Test Leads



**FX-0000C12**  
SMD Test Fixture



**FX-0000C20**  
Liquid Dielectric Material Test Fixture



Frequency	DC~10MHz	DC~30MHz	DC~30MHz
Max. Voltage/ Current	±42V	±42V	±42V
DUT Size	≤10mm	≤7mm	Electrode Diameter : 38mm Gap of electrodes : 0.3/0.5/1/2/3/5mm
Applicable Models	6632/ 6621/ 6630/ 6363~6367	6632/ 6621/ 6630/ 6363~6367	6632/ 6621/ 6630

**FX-LR0001**  
Automatic Level Compensation Fixture



**FX-0000C4**  
DIP Test Fixture



Frequency	100Hz~100kHz	Frequency	DC~1MHz
Output Impedance	10 Ω (ON), 25 Ω/ 100 Ω (OFF)	Max. Voltage/ Current	±42V
Output Voltage Sweeping	AC 0.1 ~ 1V rms (ALC ON)	DUT Size	Max. 64mm
Max. Output Current	0.15A	Applicable Models	6632/ 6621/ 6630/ 6363~6367
Applicable Models	6632/ 6621/ 6630		

**TL-000003**  
RS-232 Cable



**TL-000007**  
USB Cable



Applicable Models	6632/ 6621/ 6630/ 6363~6367	6632/ 6621/ 6630
Accessory Description	180cm	Type-A TO Type-B   180cm